



What happens to data during a Mobilise-D study and how do researchers use it?

Researchers are using participants' data to create a measure of walking in the real-world. We like to think that participants are giving the gift of information to researchers to design more accurate health measures. The researchers then pass that gift on to future patients who will receive better care as a result.

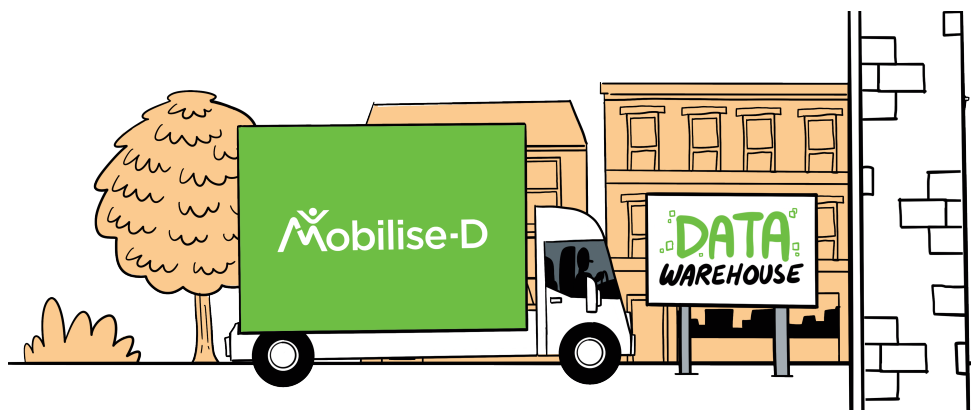


The Data Journey

Step 1 Collection

Information is collected five times throughout the project.

Movement data is collected from sensors and devices both in the clinic and outside, along with screening, demographic, and more clinical data collected in questionnaires.

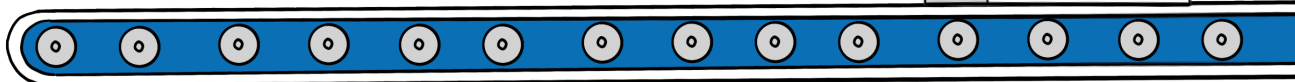


Step 2 Recording and De-identifying

The clinicians who collected the data then upload it to a secure server.

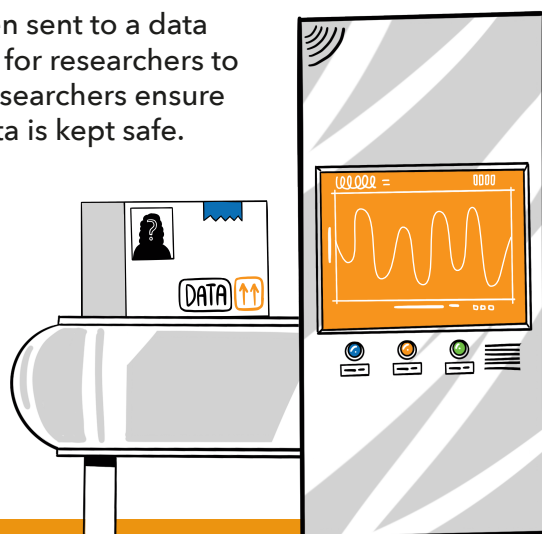
This server uses algorithms - a process or set of rules to be followed in calculations - to ensure all the data is recorded and scored in the same way.

All data is de-identified - this means that participants are assigned a number and none of their personal details are used in any analysis.



Step 3 Analysis

Data from across the whole study is then sent to a data warehouse for researchers to analyse. Researchers ensure that the data is kept safe.



Step 4 Development

Finally, researchers use the data to develop a new measure for mobility so it can be assessed more accurately for patients with a long term health condition.



To find out more about the study, visit: mobilise-d.eu



Or see our other co-designed animations about Mobilise-D at bit.ly/mobilised-animations