



Mobilise-D

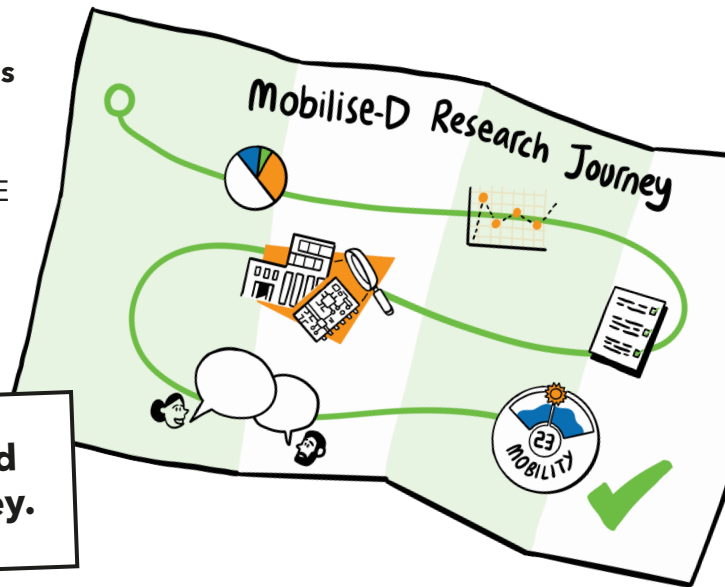
Patient and public involvement and engagement (PPIE) is crucial to world-leading research.



We believe that the patient voice has to be at the centre of our research.

At Mobilise-D we found ways to meaningfully collaborate with our PPIE group in the face of complexity and a global pandemic. We built our approach around one core ideal:

The patient voice must be integrated and equal in every part of the research journey.



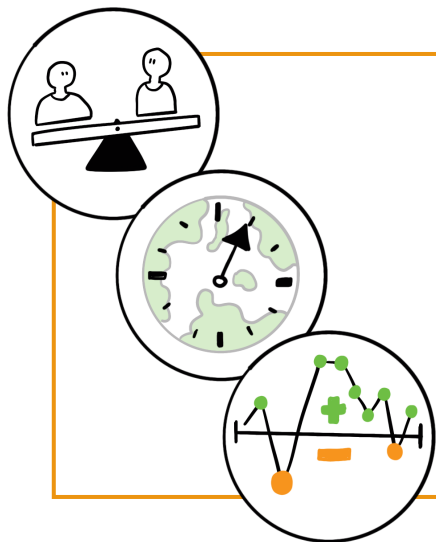
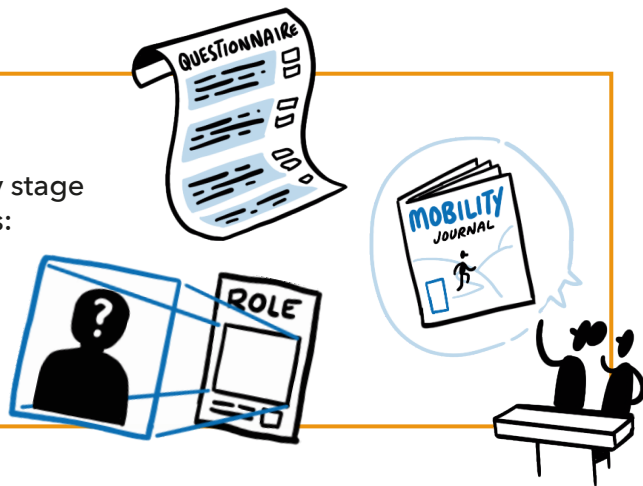
Diversity

We started by ensuring that our Patient and Public Advisory Group (PPAG) was as diverse as possible. Our collaborators spanned a diversity of nationalities, age groups and long-term conditions.

Equality

We made sure that our PPAG had an equal voice at every stage of decision making. PPIE representatives and researchers:

- co-created role agreements and expectations
- co-designed research questionnaires
- co-authored publications,
- and co-presented our work at events.



Flexibility and communication

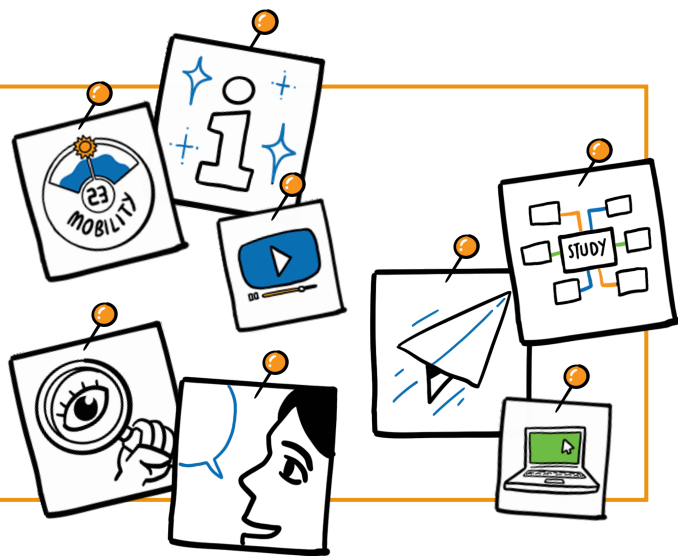
We adapted how we worked together according to the need, time zones, and fluctuating health conditions of our PPAG. This meant:

- providing multiple times to meet
- alternative ways to feedback
- and regular communication.

Our PPAG was regularly informed, to help them understand how, when, and why their contribution was needed. The research team also fed back to the group what impact their contribution had on the research.

PPIE helped us to:

- improve study design
- disseminate Mobilise-D work
- develop novel and engaging approaches to inform patients and the public
- understand the importance of mobility from the patient perspective
- and co-build a model to emphasize this for future researchers.



No matter how complex your research project is, good PPIE is always possible. See how our learnings could inform your practice at the links below:



See more recommendations in our PPIE paper at bit.ly/mobilised-ppie



Or see our other co-designed animations about Mobilise-D at bit.ly/mobilised-animations